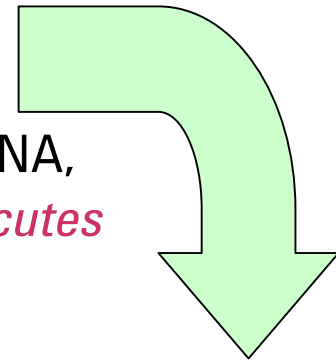
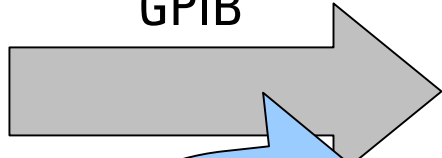


Code Translator (CxL) Overview



GPIB



User program running on a PC

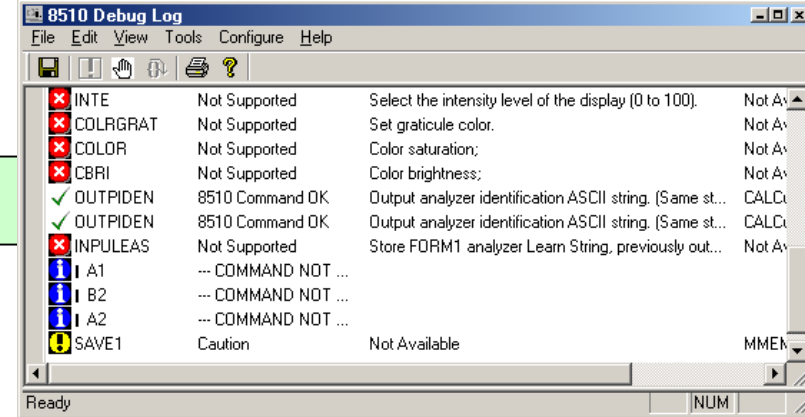
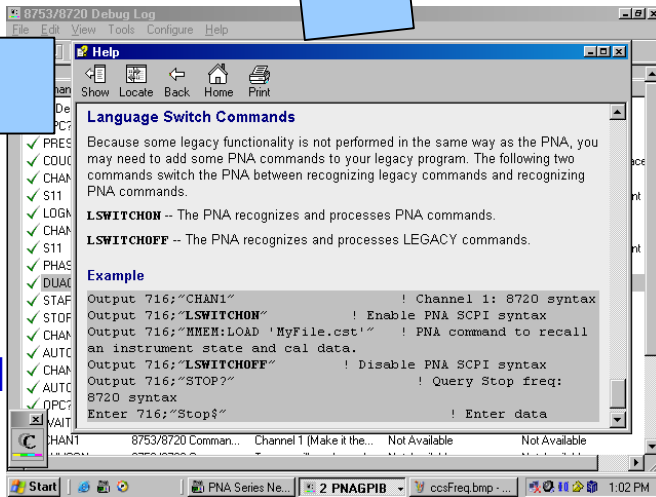
With CxL running on PNA, PNA *converts and executes*

Solution #2. Create user-defined commands, add to configuration file, re-launch CxL

Solution #1.

Modify user program.

Examples in Help File can be inserted as subroutines in user's program



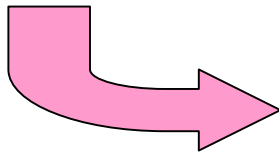
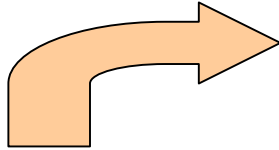
Command translation can be logged & viewed real-time on the PNA

Commands not recognized may be looked up in Help File for program examples



Agilent Technologies

User Model



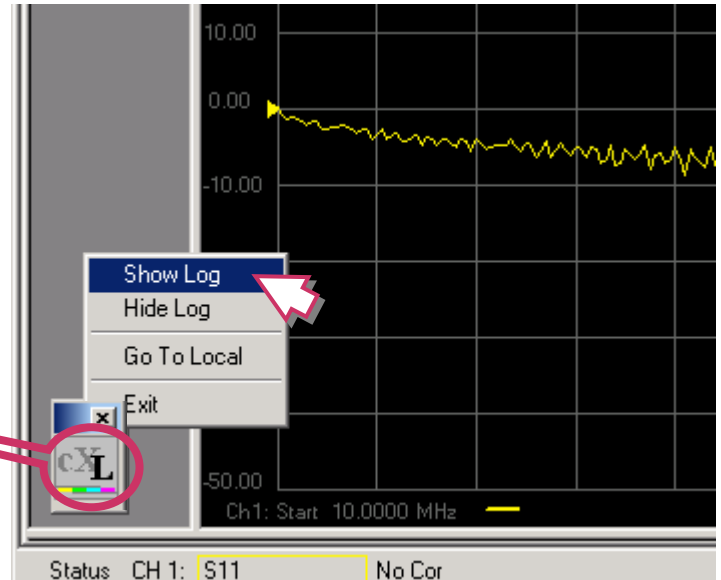
1. Run existing 8510 setup
2. Disconnect PC GPIB from 8510
3. Connect PC GPIB to PNA
4. Preparation before CxL launch
5. Load & Launch CxL in PNA
6. Complete Option Setup in CxL
7. Run program as usual on PC
8. For commands not recognized, either modify user program or create user-defined commands & store in CxL, then go back to step #5, otherwise, done!



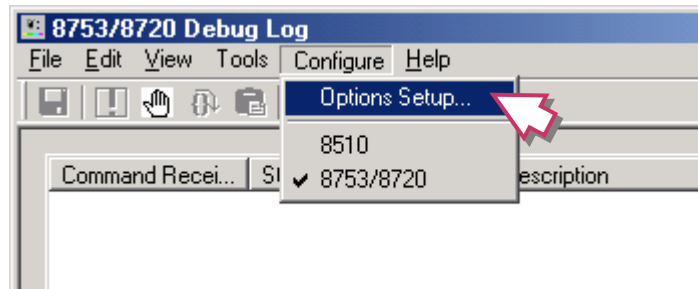
Launching CxL

1. **Load CxL onto PNA (for convenience, setup as a Macro key)
(Previous version must be uninstalled before installing latest version)**

2. **Click on CxL,
select Show Log (to view real-time)**

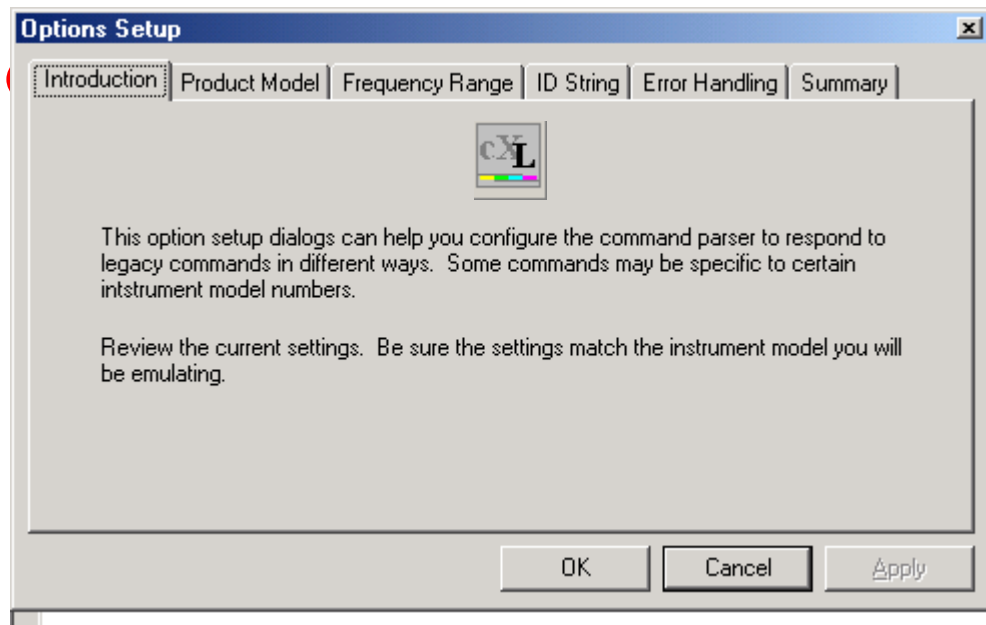


3. **Click on Configure (menu bar on top),
select Options Setup (to proceed with setup)**

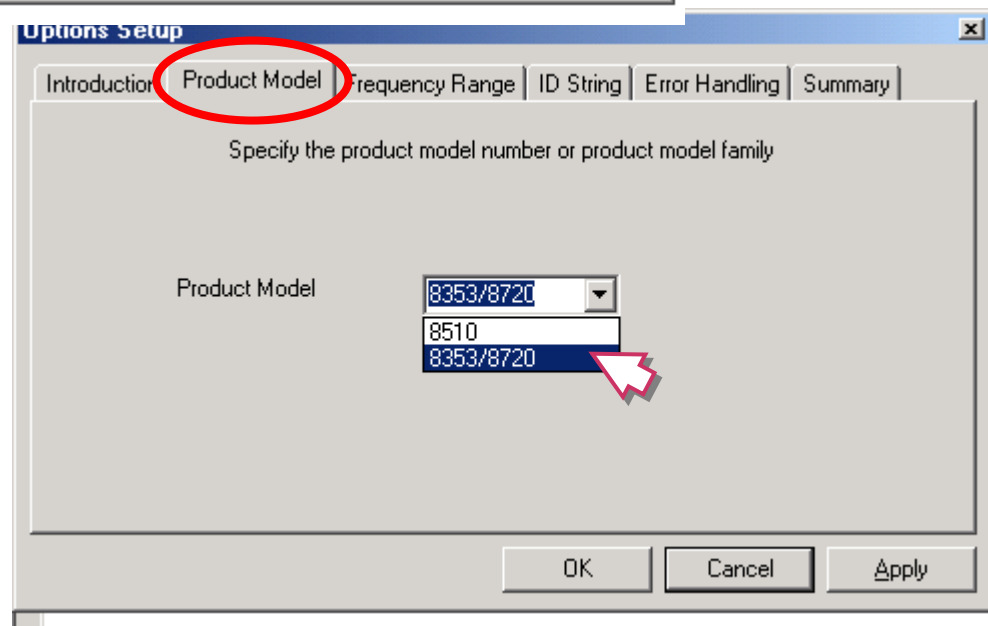


CT – Options Setup in Six Simple Steps

Step 1.

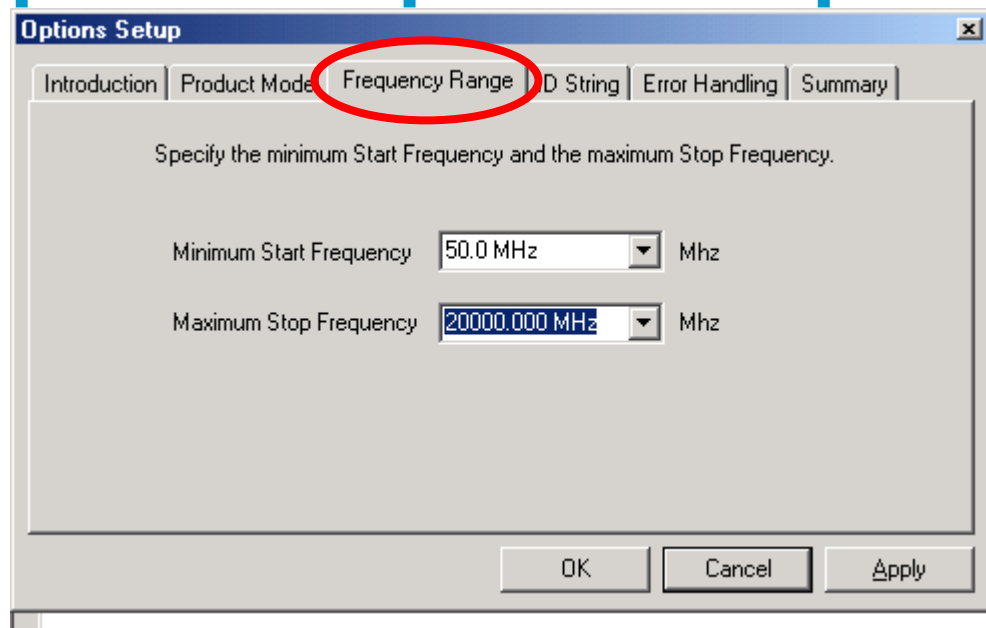


Step 2.



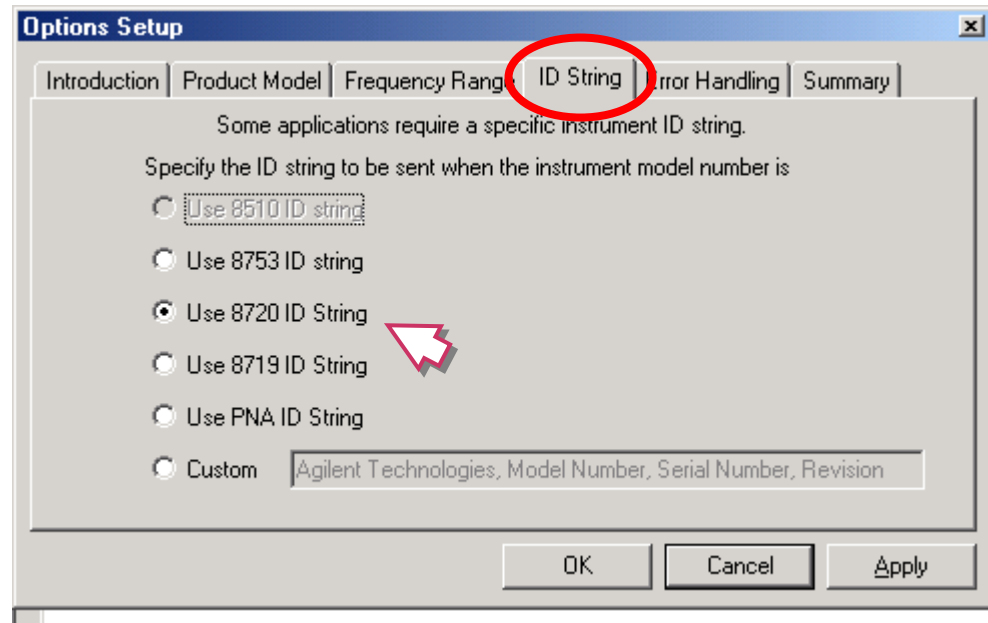
CT – Options Setup in Six Simple Steps

Step 3.



The screenshot shows the 'Options Setup' dialog box with the 'Frequency Range' tab selected. The 'Introduction' tab is also visible. The dialog contains two frequency input fields: 'Minimum Start Frequency' set to '50.0 MHz' and 'Maximum Stop Frequency' set to '20000.000 MHz'. Both fields have a dropdown arrow to the right. At the bottom, there are 'OK', 'Cancel', and 'Apply' buttons. A red circle highlights the 'Frequency Range' tab label.

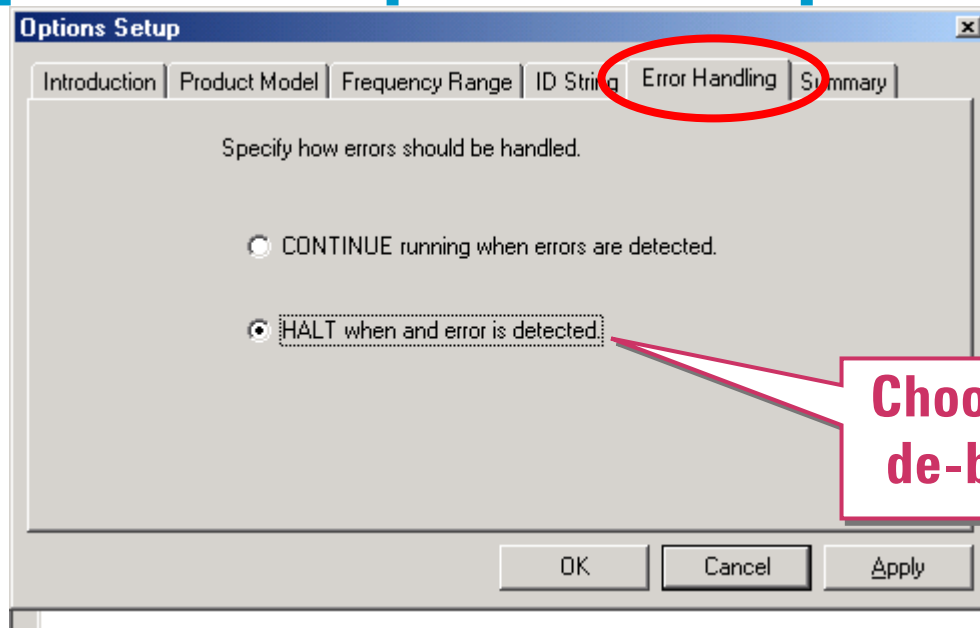
Step 4.



The screenshot shows the 'Options Setup' dialog box with the 'ID String' tab selected. The 'Introduction' and 'Frequency Range' tabs are also visible. The dialog contains a radio button selection for the ID string. The options are: 'Use 8510 ID string', 'Use 8753 ID string', 'Use 8720 ID String' (which is selected), 'Use 8719 ID String', 'Use PNA ID String', and 'Custom'. The 'Custom' option has a text input field containing 'Agilent Technologies, Model Number, Serial Number, Revision'. A mouse cursor is pointing at the 'Use 8720 ID String' radio button. At the bottom, there are 'OK', 'Cancel', and 'Apply' buttons. A red circle highlights the 'ID String' tab label.

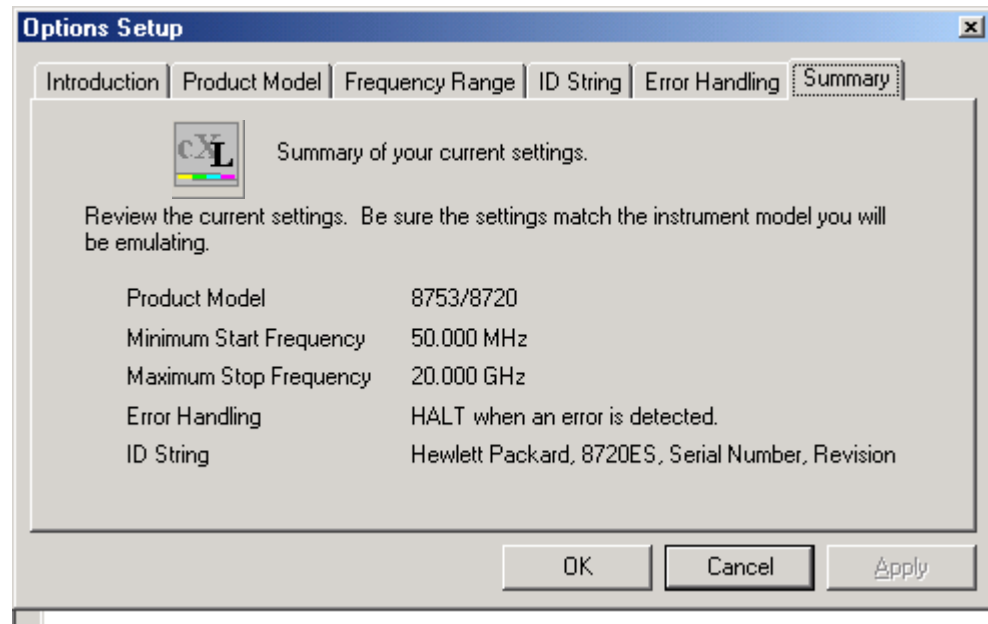
CT – Options Setup in Six Simple Steps

Step 5.



Choose HALT while you are de-bugging your program.

Step 6.



Example of PNA Display While Running CxL



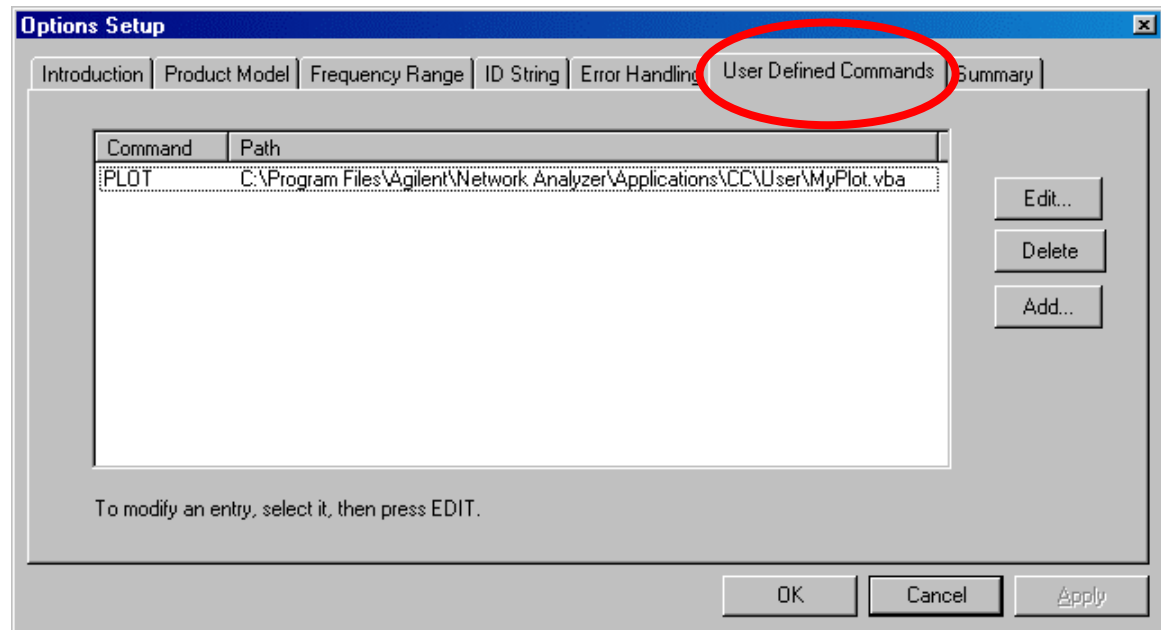
What To Do if Commands Not Recognized?

Alternative #1

- Look up commands in Help File
- Review program examples
- Modify user program by inserting program examples as subroutines

Alternative #2

- Add User-Definable commands to CxL

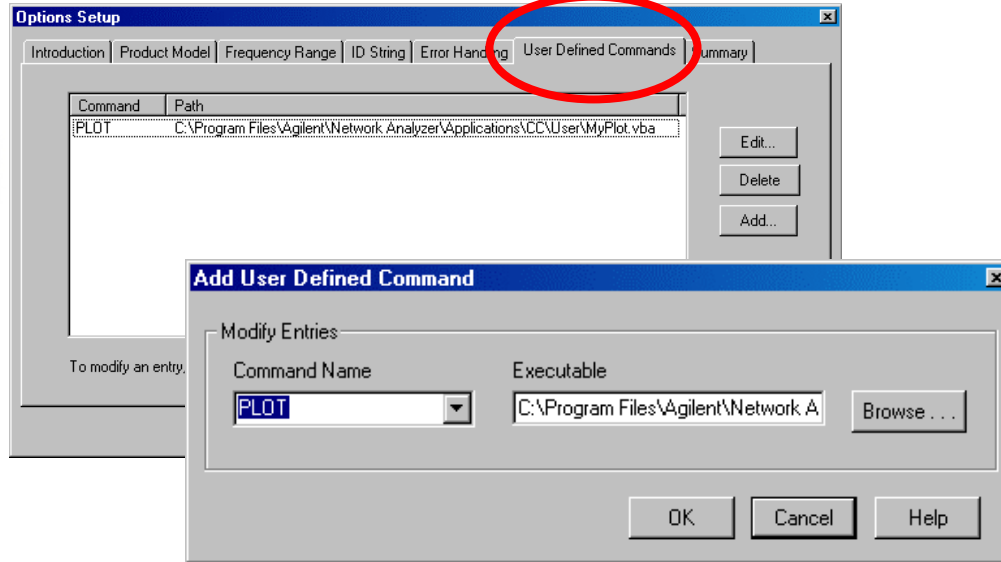


How to add User-Definable commands to CxL?

1



2



3



1. Create executable (VBscript, VB, C++ ...), and store in PNA at C:\Program Files\Agilent\Network Analyzer\Applications\CC\User
2. Launch Code Translator (CxL)
Go to *Option Setup*, select *User-Define* tab, add executable
3. Re-run user-program on PC